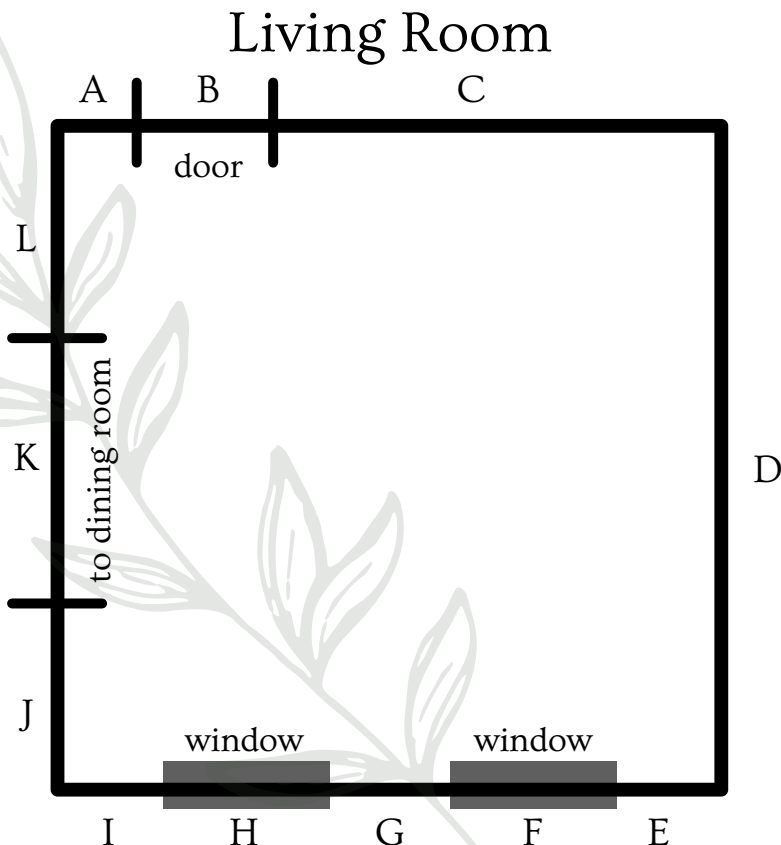


# Room Measurement Guide

## Instructions:

1. Draw a basic room sketch to show the shape of the room and placement of windows, doors, and wall openings. Add any additional information as needed (e.g. wall opening leads to dining room).
2. Clearly label lengths of wall segments, doors, windows, and any other notable architectural elements on your sketch.
3. Measure the length (and height if applicable) of each element and write the measurement down in the key. Make sure to note if your measurements include the trim or not.
4. Measure your ceiling height and note it on the sketch.
5. Take a photo or scan it and email it back



## Key:

- A: 11"
- B: 3' (including trim)
- C: 9'6"
- D: 14'2"
- E: 1'2"
- F: 2'8"W x 4'4"H (including trim)
- G: 7'1"
- H: 2'8"W x 4'4"H (including trim)
- I: 12"
- J: 3'7"
- K: 7'
- L: 3'7"
- Ceiling height: 9'